

FOR SALE OR JOINT VENTURE

Commercial Vacant Land

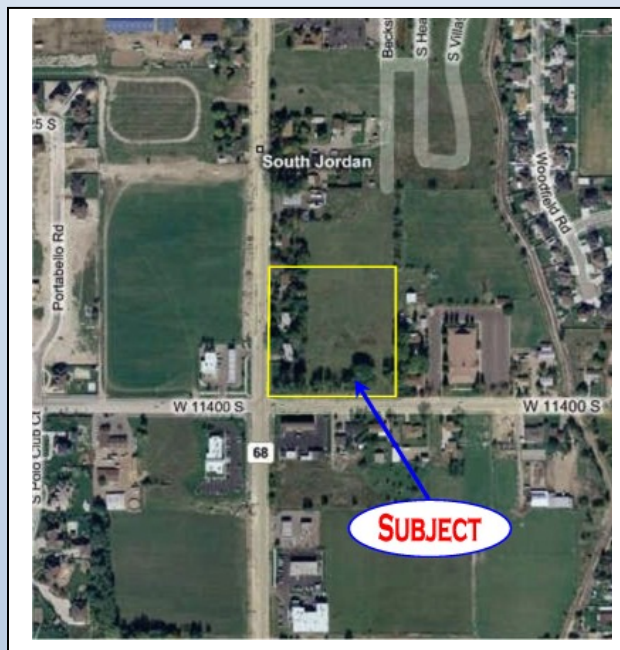
11400 South Redwood Road
South Jordan, UT 84095

Property Information

- Corner Property- 6.25 Acres
- High Traffic (drive home side)
- Two major highways intersections
- Avg. household income is very high (2mile radius)
- All utilities are on site
- VMU- South Zoning

Property Information

- Owner will sell all or part of the property
- Prices are uniform for entire parcel at \$12 sqft
- Prices will be a quoted for specific parcels, separately.
- Prelim. Layout for site is available/request.



Contact

Tom Davis 801-262-3388/Cell 801-864-6867 or Tomd@partnershipproperties.com
Glen Nelson 801-262-3388/Cell 801-680-6249 or Glenn@partnershipproperties.com

Partnership Properties

YOUR PROFESSIONAL REAL ESTATE COUNSELOR